

KEEPING UP THE FLOW

INDUSTRIAL

BLÜCHER®



DRAINAGE SYSTEMS FOR BIOTECH AND PHARMACEUTICAL INDUSTRY

STAINLESS STEEL DRAINAGE SYSTEMS

Drainage systems for industrial facilities all over the world

Founded in 1965 by plumber Johannes Blücher Skibild, BLÜCHER has over the years developed into a leading European stainless steel drainage specialist, providing high-quality drainage solutions for customers within the housing, commercial, industrial and marine segments.

BLÜCHER® drainage systems have proven their functionality and reliability in industrial applications all over the world. Food processing, beverage industry, pharmaceutical and chemical plants are among the typical users of BLÜCHER® drainage solutions.

BLÜCHER is committed to the promise of **Keeping up the flow**. Industrial businesses depend on the performance of our solutions every day where hygiene and durability are essential. We offer a comprehensive range of products to solve any drainage requirement.

At BLÜCHER, **Knowing how** means putting years of expertise in stainless steel into practical use, and it means knowing how to stay at the forefront through investments in the newest product design, testing and production facilities. BLÜCHER is considered one of the most innovative companies within indoor drainage. Continuing to develop inventive products and solutions, staying ahead through knowing how is still our ambition.

BLÜCHER is **Dedicated to Service** and meeting the demands of our customers is part of our company culture. Therefore, our employees is our most valuable asset, offering our customers a flexible and efficient service.

Common sense and close attention to our markets enable us to utilize our know-how and adapt our products and solutions to local building customs and customer requirements around the World.

Segments

Housing

Drainage solutions all in stainless steel for bathrooms, utility rooms and basements in single- and multi-storey housing, preventing bad smell and standing water from becoming a concern.

Commercial

Hospitals, schools, restaurants and fitness centres benefit from the wide range of BLÜCHER® drainage solutions. The smooth stainless steel surface and high flow capacity prevent settlements and standing water in public areas, and the modular systems provide numerous possible combinations.

Marine

Cruise liners, ferries, yachts, merchant and navy vessels, off-shore installations all depend on the performance of our solutions at sea where safety, good hygiene, prevention of bad odours and light-weight systems are essential.

Industrial

BLÜCHER specializes in drainage solutions for large industrial facilities. Among the industries in which we play a major part are the food industry and the pharmaceutical industry, relying on our hygienic and reliable solutions.



Product groups

BLÜCHER® EuroPipe



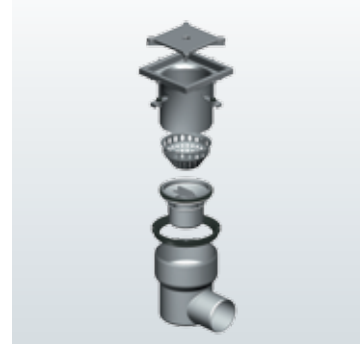
Complete range of push-fit pipes and fittings in stainless steel from OD40 to OD250 mm

BLÜCHER® Channel



Standard, modular and custom-made channels and kitchen channels all in stainless steel

BLÜCHER® Drain



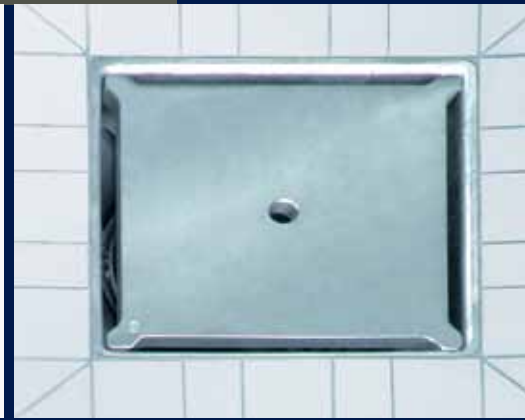
Stainless steel light- to heavy-duty drains for all types of floors. Height adjustment, rotation, tilt and removable water trap. NEW: BLÜCHER® Drain Roof for stainless steel roof drainage in vacuum or gravity systems.



Why choose a **BLÜCHER®** stainless steel drainage system

BLÜCHER is a recognised supplier to companies within biotech, pharma, drug manufacturing, veterinary, agrochemical, cosmetics and veterinary segments worldwide, also in cooperation with leading engineering houses. Our extensive reference list is available on request.

In addition to our extensive range of standard products, we offer special and customized solutions on request. For any special requirements, our sales engineers offer technical assistance and advice based on our extensive know-how within the development of stainless steel drainage products for all applications.



- > Complete stainless steel drainage system made to last in the biotech and pharmaceutical industry
- > Meets the strictest safety demands, e.g. resistance to high temperatures and a wide range of chemicals
- > Stainless steel has a smooth surface that minimizes bacterial growth, it is impact resistant and fire safe compared to plastic
- > Careful product design with smooth surfaces and rounded corners to eliminate bug traps
- > Floor drains and channels with high flow capacities and excellent hygienic properties, e.g. water trap can be removed for cleaning/inspection

- > Gratings for all types of flooring and weight load requirements, e.g. heavy weight loads, smooth floors for easy transport or lockable gratings
- > Complete push-fit pipework system OD40-250 mm for above- and below-ground installation. Low weight, ease of installation and hardly any maintenance required
- > Extra hygienic solutions, e.g. polished gratings and pipes; clean-room drains with gastight cover; flushing-rim drains; dual-contained drains, channels and pipes
- > Technical assistance based on extensive knowhow and experience in developing customized solutions for drainage projects of all kinds



BLÜCHER World class: Lundbeck Pharmaceuticals Ltd., UK

Lundbeck Pharmaceuticals Ltd. chose BLÜCHER® Channel and BLÜCHER® EuroPipe for its bulk pharmaceutical facility in Seal Sands, North East England. John Griffin of Shepherd Engineering Services Ltd. who installed BLÜCHER® EuroPipe recalls:

“The specification called for a fully welded stainless steel pipework system due to the nature of the effluent involved. BLÜCHER® EuroPipe, which although normally used as a push-fit system is also easy to make welded joints and was chosen ahead of traditional ANSI pipework.

Once we had removed the EPDM seals we were then able to joint the pipework eliminating problems with alignment, purge the pipe as normal and TIG weld the joint. ”.

With all the necessary BLÜCHER® products being delivered to plan, the plant was completed, validated and in full production in January 2003, which full-filled the set time schedule.

All BLÜCHER® drainage products are manufactured in Denmark using the most modern production methods, including robot technology, and in accordance with the internationally recognised quality standard ISO 9001.

Furthermore, the most respected approval authorities endorse the BLÜCHER® drainage products worldwide, including ETA Denmark, Sitac Sweden, LGA Germany, BBA UK and HACCP.

All BLÜCHER® drainage products for hygienically demanding applications are designed in accordance with the provisions of EHEDG (European Hygienic Engineering and Design Group).

BLÜCHER® products are delivered with a document of origin, and product approval certificates are available at www.blucher.com or on request.



OTHER SELECTED REFERENCES WITHIN BIOTECH AND PHARMACY

- > Abbot Laboratories
- > Astra Zenica
- > Eli Lilly
- > Johnson & Johnson
- > GSK
- > Roche
- > Colgate Palmolive
- > Procter & Gamble
- > Pfizer
- > Repsol
- > Merck
- > Unilever





At BLÜCHER more than 300 employees create an annual turnover of more than EUR 50 mio. Through know-how, dedicated service and common sense we design, produce and market high-quality stainless steel drainage solutions for customers within the housing, commercial, industrial and marine segments all over the world.

FIND YOUR LOCAL
BLÜCHER SPECIALIST AT

www.blucher.com

.ae

.cn

.co.uk

.de

.dk

.fi

.fr

.in

.nl

.no

.pl

.ru

.se

BLÜCHER®

Pugdalsevej 1
DK-7480 Vildbjerg
Tel. +45 99 92 08 00
Fax +45 99 92 08 30
export@blucher.com